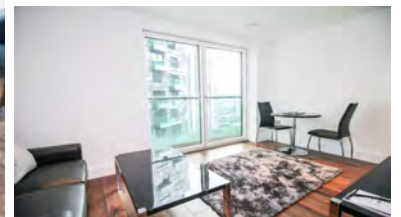


Clarendon at Lincoln Plaza

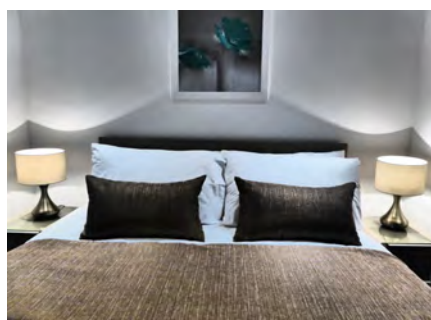
Duckman Tower & Talisman Tower, Canary Wharf



The apartments at Lincoln Plaza by Clarendon are located in Duckman Tower and Talisman Tower part of the Galliard Homes regeneration development in Canary Wharf. Both towers are positioned just a 10 minute stroll to Canary Wharf underground station and only 2 minutes by foot to South Quay DLR. This position is ideal for executives working in Canary Wharf and also the City – as Bank is easily commutable from there. For the shoppers Canary Wharf has an extensive shopping centre with offerings from top designers, Department stores and high street shops and for the foodies there is a wide range of restaurants, cafes and bars to choose from all on the doorstep.

Duckman Tower houses the studio apartments whereas Talisman Tower houses the one bedroom apartments. These contemporary apartment complexes are the perfect alternative to a hotel, offering a welcome and stylish home in the capital. These modern apartments provide an open plan living and dining area with a private bathroom.

[Reserve this apartment!](#)
info@findlondonapartments.com
[+44 \(0\)20 8012 7847](tel:+44(0)2080127847)



Features include

- * Concierge
- * Weekly Housekeeping
- * Television with freeview
- * Kitchen (fully fitted and equipped)
- * Washer / Dryer

